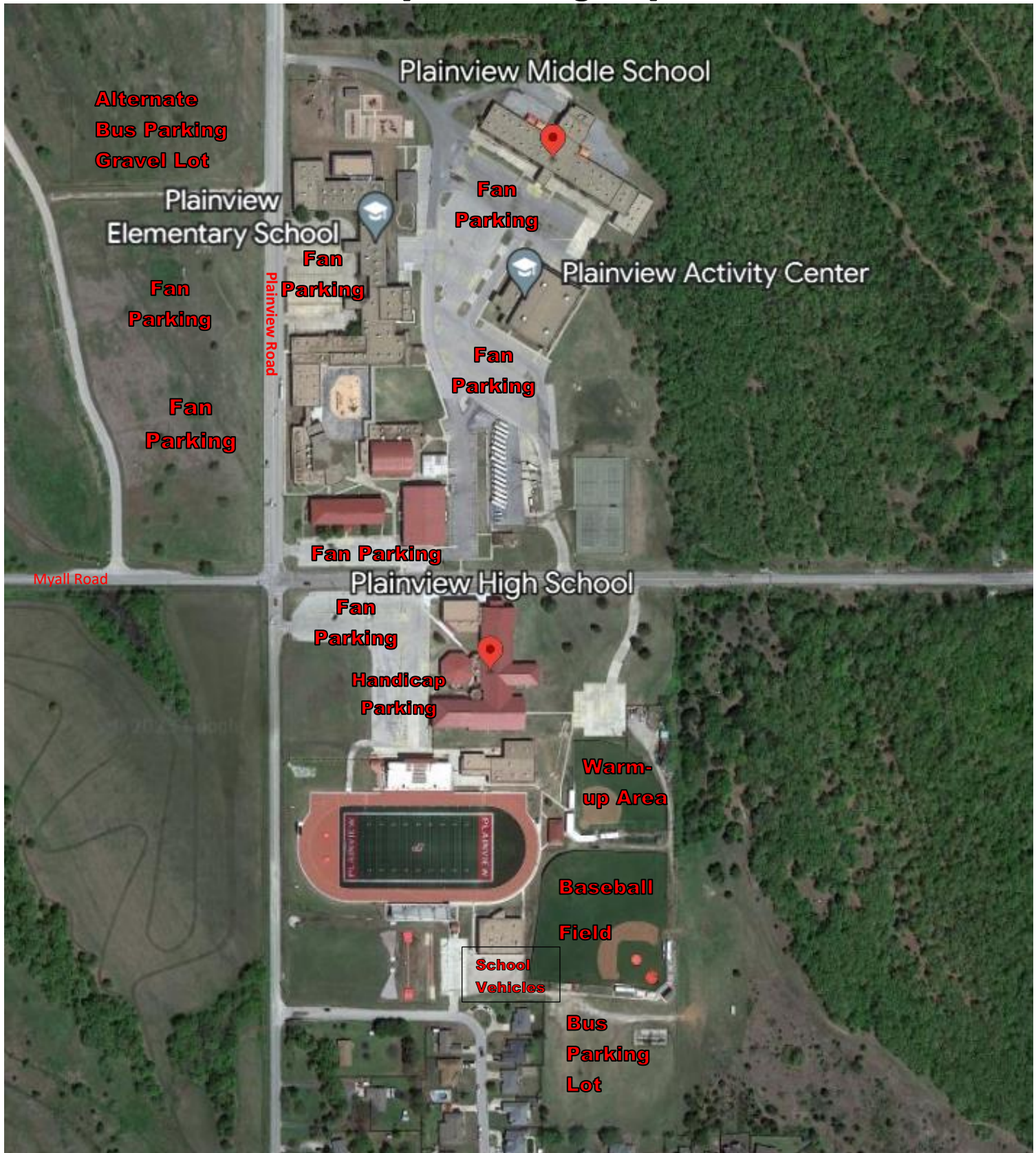
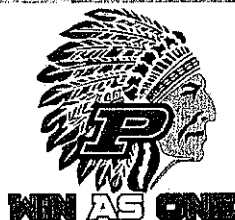
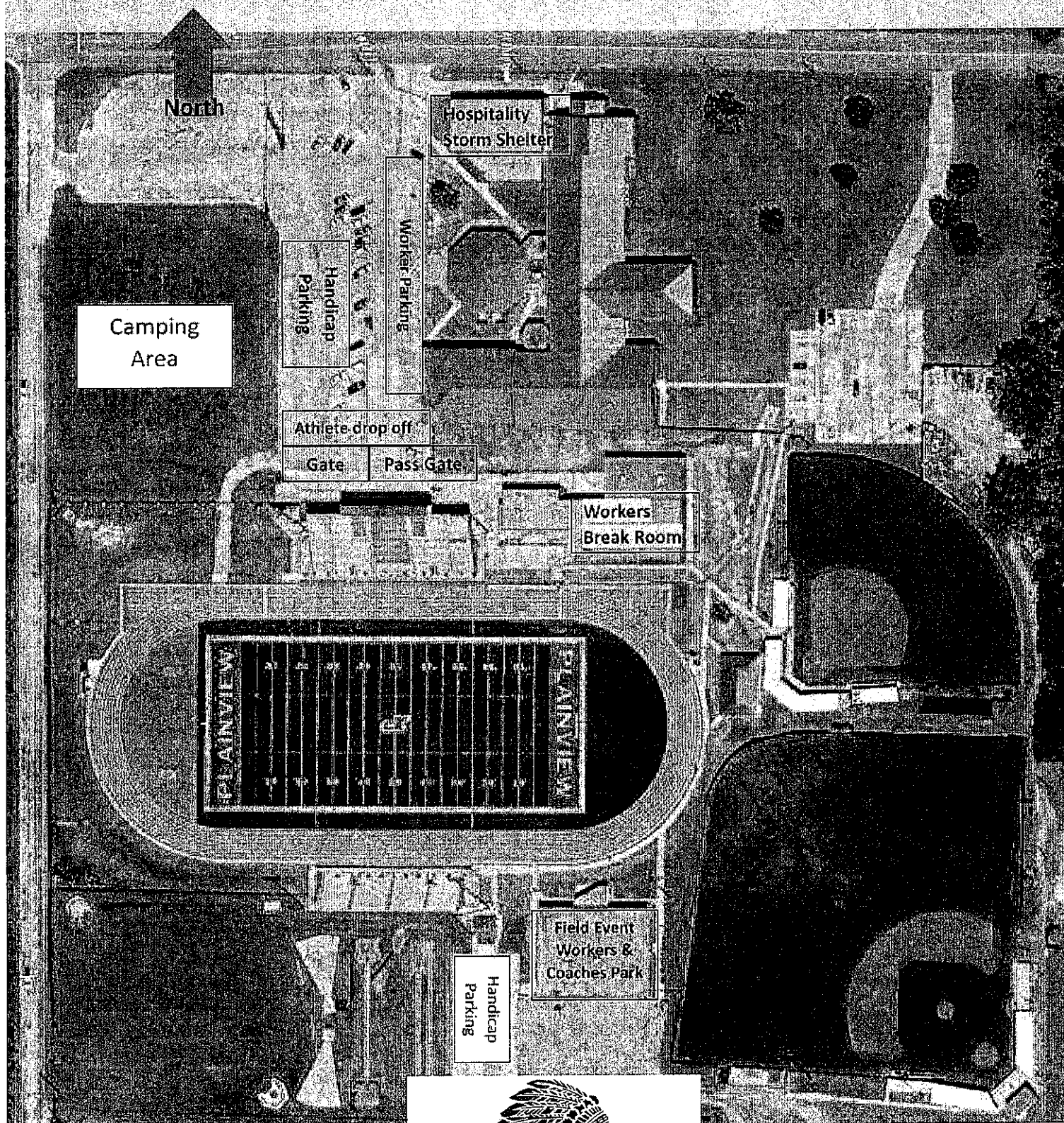


Campus Parking Map



Buses will be asked to park in the lot south of the baseball field (If conditions are too wet, buses will park at the gravel lot across from the elementary. School SUV's can park in the bus lot or the lot east of the field event area. There is handicap parking in the high school parking lot. Additional handicap spots will be reserved in the lot south of the field. All other spectators should park north of the stadium on campus. **There will be no parking allowed in the neighborhood south of the stadium! Please share with your fans! We will be running shuttles to get fans to and from their parking spot**

Facility Map



WIN AS ONE

STATE TRACK SEVERE WEATHER PLAN

PLAINVIEW HIGH SCHOOL IS EQUIPPED WITH A PERRYWEATHER LIGHTNING DETECTION SYSTEM. AN ALERT WILL BE GIVEN SHOULD LIGHTNING OCCUR WITHIN 8 MILES.

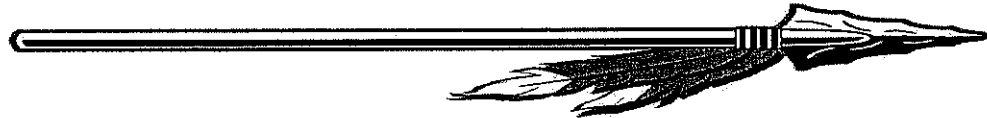
IN CASE OF LIGHTNING OR SMALL SHOWER WE WILL OPEN BOTH FIELDHOUSES FOR ATHLETES AND COACHES ONLY. ALL PARENTS AND FANS WILL ENTER THE DOORS ON THE SOUTHWEST CORNER OF THE HIGH SCHOOL. PLEASE STAY IN THE HALLS OR COMMON AREAS.

IN EVENT OF SEVERE WEATHER/TORNADO POSSIBILITIES, ALL ATHLETES/COACHES/FANS WILL ENTER THE DOORS ON THE SOUTHWEST CORNER OF THE HIGH SCHOOL AND PROCEED TO THE TORNADO SHELTER ON THE NORTH SIDE OF THE SCHOOL. WHEN FULL, WE WILL ESCORT ACROSS THE STREET TO THE INTERMEDIATE SCHOOL SHELTER. PLEASE REMAIN THERE UNTIL THE "ALL CLEAR" IS GIVEN.

PLAINVIEW ADMINISTRATION WILL MONITOR ALL WEATHER, AND WILL MAKE SURE ALL SHELTERS ARE ACCESSIBLE IF NEEDED.



2024-2025
Plainview Public Schools
Emergency Medical Services Plan for Athletic Events & School Activities



Plainview Public schools through the Athletic Department has worked with the Southern Oklahoma Ambulance Service to develop and prepare the following plan for the provision of emergency medical services at Plainview athletic events and/or activities held at our district facilities. The following plan shall be reviewed and updated annually. The plan will be on file at the Plainview Administration Office, in the office of the School Nurse, the Athletic Department, and the Southern Oklahoma Ambulance Service. Plainview Staff members will also be made aware of the policy.

Plainview Public Schools Emergency Medical Services Plan

The following plan should be followed in the event of a medical emergency to a student during an athletic or activity event. All coaches, sponsors, school nurses, and principals should be familiar with this document and their role and responsibility in case of a medical emergency.

An emergency is the need for Emergency Medical Services (EMS) to give further medical attention and/or transport an athlete or student to the hospital. The Southern Oklahoma Ambulance Service (SOAS) serves the Plainview Public Schools district.

It is important in these situation that there is coordination between the different types of events. The following guide is intended to outline the roles and protocols to be followed should an emergency occur. Situations when 911 should be called are as follows:

- An athlete or student is not breathing
 - An athlete or student has lost consciousness
 - An athlete or student is suspected of having a possible neck or back injury
 - An athlete or student has an open fracture (bone that has punctured through the skin)
 - An athlete or student has suffered severe heat exhaustion or a suspected heat stroke
 - An athlete or student has severe bleeding that cannot be stopped
 - An athlete or student is having seizure activity
 - An athlete or student is suffering from respiratory problems
 - An athlete or student is having a diabetic emergency
 - An athlete or student is having a drug reaction or suspected overdose
 - An athlete or student is having a severe allergic reaction
 - Any other time deemed necessary for the safety of the student/athlete
- Noted: An ambulance will be stationed on the Northwest side of the stadium during all home, varsity football games, and will be on standby at any other large events.



The administrator on duty at the event will be the designated person in charge. That person is responsible for deciding whether or not to call 911 and will instruct others on how they may be of help. This will be the person that stays with the student until emergency help arrives. If the event is during the school day, the school nurse should also be contacted.

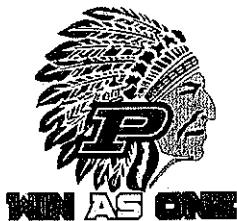
Once it has been decided that EMS should be called, the following protocol should be followed:

EMS PROTOCOL

When you call EMS provide your name and title or position, current address (specific location on campus), telephone number, number of individuals injured, condition of injured/brief description of injuries, first aid treatment already administered, and any other information as requested.

EMERGENCY ACTION PLAN

1. The administrator on duty will be deemed the person in charge, and will stay with the athlete or student to monitor the student's condition and administer necessary first aid. If possible another staff member should also stay and assist. As soon as possible the superintendent should be notified that there is an emergency situation on campus.
2. The administrator on duty will make the call to EMS or will designate another person to make the call. Specific Instructions: Call 911 from a cell phone. EMS should be told what the emergency is, the condition of the student and specific instructions on where the athlete is. Let EMS know that someone will meet them at the closest intersection/parking area to aid in directing the ambulance. **DO NOT HANG UP UNTIL EMS HANGS UP FIRST**
3. Landline phones are located in each school's front office, in each classroom, and in the offices within the Athletic Department.
4. The administrator on duty will then send someone(s) to the closest intersections/parking areas to direct the ambulance.
5. The administrator will designate another person to attempt contact with the student's parents.
 - For non-athletic events, emergency contact information can be found in each school's front office
 - For student athletes, the emergency contact information can be found on the RANK ONE form from any of the coaches. If a parent is not present at the athletic event where the student is injured, the RANK ONE form should accompany the athlete to the hospital.
6. If transport is deemed necessary by EMS, the student will be taken to the most appropriate hospital that EMS advises as necessary. It is noted that the local hospital for our community is Mercy Memorial Hospital, located at 1011 14th Ave NW, Ardmore, OK 73401.



Automated External Defibrillator (AED) machines are located in the following athletic facilities at Plainview:

- Main entrance wall in the Virgil Trout Fieldhouse
- Hallway just off the weight room in Centennial Fieldhouse
- Lobby of the Activity Center
- Inside court area of Practice Gym
- Inside court area of Elementary Gym
- We have eight AED's that are available to travel with teams on the road
- In each main academic buildings near front office
- In each main building storm shelter
- 5th grade hallway to serve the auditorium
- Fine arts building

All Plainview Administrators and coaching staff are trained by Red Cross in CPR, First Aid and AED use.

